

# Bredel 2100



Hose Pumps

Bredel hose pumps (65-2100)

## Features and benefits

- Dry running and self-priming
- No seals, ball-checks, diaphragms, glands, immersed rotors, stators or pistons to leak, clog, corrode or replace
- Handles abrasive slurries, corrosive acids, gaseous liquids
- No slippage, allowing true positive displacement for accurate, repeatable metering
- No ancillary equipment, check valves, sealing water flush systems or run-dry protection required
- Fully reversible to blow out suction and drain lines safely

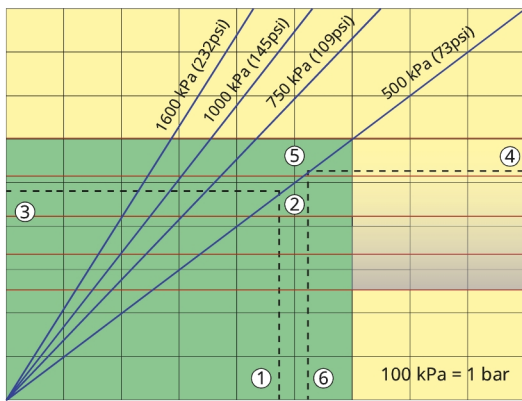


## Bredel 2100 performance

### Bredel 2100

Required motor power kW (hp)

- 36.0 (48.25hp)
- 32.0 (42.89hp)
- 28.0 (37.53hp)
- 24.0 (32.17hp)
- 20.0 (26.80hp)
- 16.0 (21.45hp)
- 12.0 (16.08hp)
- 8.0 (10.72hp)
- 4.0 (5.36hp)



Product temperature C (F)

- 40 (104F)
- 50 (122F)
- 60 (140F)
- 70 (158F)
- 80 (176F)

Pump speed rpm	5	10	15	20	25	30	35	40	45
Capacity L/h	12000	24000	36000	48000	60000	72000	84000	96000	108000
Capacity USGPM	52.8	105.7	158.5	211.3	264.1	317	369.8	422.7	475.5

Note: The area of continuous operation diminishes with increased product temperatures. For product temperatures >40C, the area of continuous operation reduces to the corresponding red temperature line.

1. Flow required indicates pump speed
2. Calculated discharge pressure
3. Net motor power required
4. Product temperature
5. Calculated discharge pressure
6. Maximum recommended pump speed

- Continuous duty
- Intermittent duty

\* Maximum 3 hours operation followed by minimum 1 hour stop

## Technical specifications

	Bredel 2100
Max. flow rate continuous	72000 L/h
Max. flow rate continuous	18997 USGPH
Max. flow rate intermittent	108000 L/h
Max. flow rate intermittent	28496 USGPH
Volume per revolution	40 L
Volume per revolution	10.57 USG
Max. continuous operating speed	30 rpm
Max. intermittent operating speed	45 rpm
Max. operating pressure	16 bar
Max. operating pressure	232 psi
Max. inlet pressure	1.5 bar abs
Max. inlet pressure	23 psi abs
Operating temperature range	-20 °C to 45 °C
Operating temperature range	-4 °F to 113 °F
Fluid temperature range	-20 °C to 80 °C
Fluid temperature range	-4 °F to 176 °F
Min. starting torque	5300 N m
Min. starting torque	46908 in.lbs
Weight	5985 kg
Weight	13195 lbs
Hose lubricant required	120 L
Hose lubricant required	31.7 USG
Port configurations	Down, Left, Right, Up
Compatible hose materials	CSM, EPDM, F-NBR, NBR, NBR for food, NR-Metering, NR-Transfer
Flange assembly type	ANSI, DIN, JIS

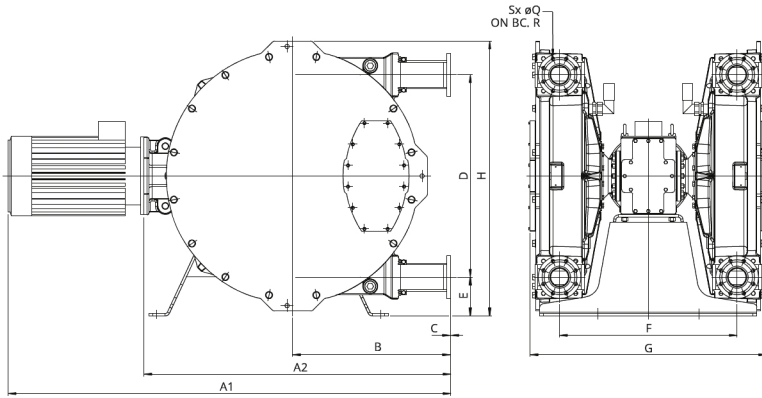
Please consult your Bredel representative for lower or higher temperature operation.

Allowable ambient temperature is based on pump capabilities and may be further limited by gearbox ambient capabilities.

## Materials of construction

	Bredel 2100
Hose material	CSM, EPDM, F-NBR, NBR, NBR for food, NR-Metering, NR-Transfer
Housing	Cast iron, ISO12944 category C4M
Rotor assembly	Cast iron, ISO12944 category C4M
Cover assembly	Cast iron, ISO12944 category C4M
Brackets and fasteners	Galvanised steel, Stainless steel 316
Support frame	Galvanised steel, Stainless steel 316
Hose clamps	Galvanised steel, Stainless steel 316
Seals	Neoprene, Nitrile

## Bredel 2100 dimensions



Type	A1	A2	B	C	D	E	F	G	H	ØQ	R	S
Bredel 2100 (mm)	*	1516	813	3	1042	199	916	1218	1415	18	180	8
Bredel 2100 (inches)	*	59.7	32	0.12	41	7.8	36.1	48	55.7	0.71	7.1	0.31

Disclaimer: The information contained in this document is believed to be correct at the time of publication, but Watson-Marlow Bredel BV accepts no liability for any error it contains, and reserves the right to alter specifications without prior notice. All mentioned values in this document are values under controlled circumstances at our test bed. Actual flow rates achieved may vary because of changes in temperature, viscosity, inlet and discharge pressures and/or system configuration. APEX, DuCoNite, Bioprene and Bredel are registered trademarks.

[wmfts.com/global](http://wmfts.com/global)



23 November 2023